

GRASP1 antibody [1E3]

Cat. No. GTX84410

| | |
|------|------------------------|
| 宿主 | Mouse |
| 克隆 | Monoclonal |
| 同种型 | IgG1 |
| 实验应用 | WB, ICC/IF, IHC-P, FCM |
| 种属反应 | Human |

实验应用

应用说明

*最佳稀释倍数与浓度应由研究人员确认

| Suggested dilution | Recommended dilution |
|--------------------|----------------------|
| WB | 1:2000 |
| ICC/IF | 1:100 |
| IHC-P | 1:50 |
| FCM | 1:100 |

以下为常规应用缩写的中文注解

WB: 免疫印迹

ICC/IF: 细胞染色

IHC-P: 石蜡切片

IHC-Fr: 冰冻切片

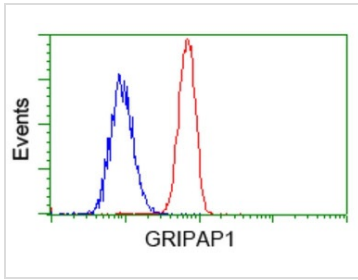
属性

| | |
|------|--|
| 形式 | Liquid |
| 存储溶液 | PBS, 1% BSA, 50% Glycerol |
| 保存剂 | 0.02% Sodium azide |
| 存放说明 | Store as concentrated solution. Centrifuge briefly prior to opening vial. For short-term storage (1-2 weeks), store at 4°C. For long-term storage, aliquot and store at -20°C or below. Avoid multiple freeze-thaw cycles. |
| 浓度 | 0.82 mg/ml (Please refer to the vial label for the specific concentration.) |
| 偶联 | Unconjugated |
| 注意事项 | 仅供实验室使用。不适用于人类或动物的任何临床、治疗或诊断用途。不适合动物或人类食用。 |



For full product information, images and publications, please visit our [website](#).

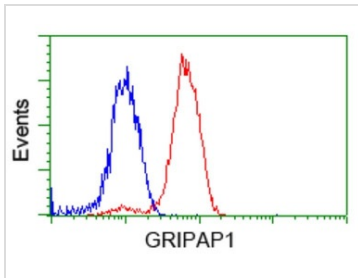
產品圖片

**GTX84410 FCM Image**

FACS analysis of HeLa cells using GTX84410 GRASP1 antibody [1E3].

Red : Primary antibody

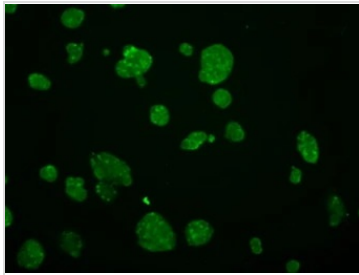
Blue : Negative control antibody

**GTX84410 FCM Image**

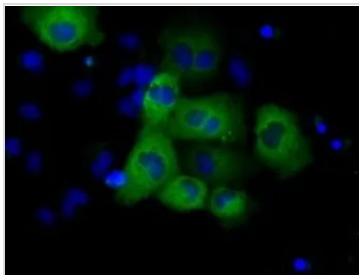
FACS analysis of Jurkat cells using GTX84410 GRASP1 antibody [1E3].

Red : Primary antibody

Blue : Negative control antibody

**GTX84410 ICC/IF Image**

ICC/IF analysis of HepG2 cells using GTX84410 GRASP1 antibody [1E3].

**GTX84410 ICC/IF Image**

ICC/IF analysis of COS7 cells transiently transfected with GRASP1 plasmid using GTX84410 GRASP1 antibody [1E3].



For full product information, images and publications, please visit our [website](#).