

GGPS1 antibody [3F9]

Cat. No. GTX84427

宿主	Mouse
克隆	Monoclonal
同种型	IgG1
实验应用	WB, IHC-P
种属反应	Human, Monkey

实验应用

应用说明

*最佳稀释倍数与浓度应由研究人员确认

Suggested dilution	Recommended dilution
WB	1:2000
IHC-P	1:150

以下为常规应用缩写的中文注解

WB: 免疫印迹

ICC/IF: 细胞染色

IHC-P: 石蜡切片

IHC-Fr: 冰冻切片

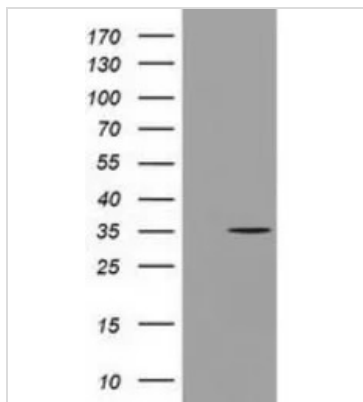
属性

形式	Liquid
存储溶液	PBS, 1% BSA, 50% Glycerol
保存剂	0.02% Sodium azide
存放说明	Store as concentrated solution. Centrifuge briefly prior to opening vial. For short-term storage (1-2 weeks), store at 4°C. For long-term storage, aliquot and store at -20°C or below. Avoid multiple freeze-thaw cycles.
浓度	0.81 mg/ml (Please refer to the vial label for the specific concentration.)
偶联	Unconjugated
注意事项	仅供实验室使用。不适用于人类或动物的任何临床、治疗或诊断用途。不适合动物或人类食用。



For full product information, images and publications, please visit our [website](#).

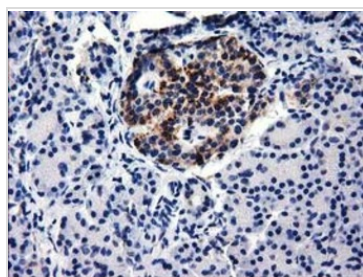
產品圖片



GTX84427 WB Image

WB analysis of HEK293T cells transfected with GGPS1 plasmid (Right) or empty vector (Left) for 48 hrs using GTX84427 GGPS1 antibody [3F9].

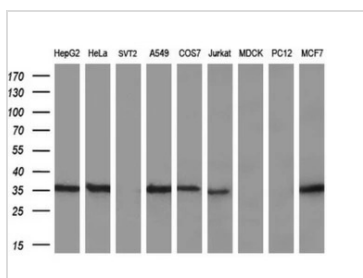
Loading : 5 ug per lane



GTX84427 IHC-P Image

IHC-P analysis of human pancreas tissue using GTX84427 GGPS1 antibody [3F9].

Antigen retrieval : Heat-induced epitope retrieval by 10mM citrate buffer, pH6.0, 100°C for 10min.

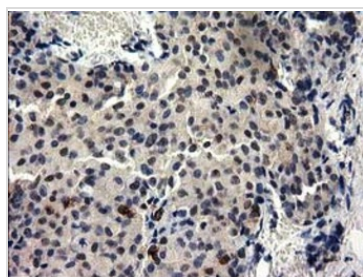


GTX84427 WB Image

WB analysis of various cell lines using GTX84427 GGPS1 antibody [3F9].

Loading : 35 ug per lane

Dilution : 1:200



GTX84427 IHC-P Image

IHC-P analysis of human breast adenocarcinoma tissue using GTX84427 GGPS1 antibody [3F9].

Antigen retrieval : Heat-induced epitope retrieval by 10mM citrate buffer, pH6.0, 100°C for 10min.



For full product information, images and publications, please visit our [website](#).