

alpha B Crystallin antibody [6D11]

Cat. No. GTX84657

宿主	Mouse
克隆	Monoclonal
同种型	IgG1
实验应用	WB, ICC/IF, IHC-P, FCM, IP
种属反应	Human, Rat, Monkey

实验应用

应用说明

*最佳稀释倍数与浓度应由研究人员确认

Suggested dilution	Recommended dilution
WB	1:500
ICC/IF	1:50-1:100
IHC-P	1:50
FCM	1:100
IP	2ug/500ul

以下为常规应用缩写的中文注解

WB: 免疫印迹

ICC/IF: 细胞染色

IHC-P: 石蜡切片

IHC-Fr: 冰冻切片

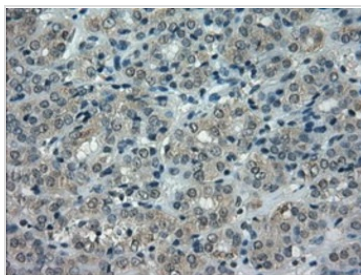
属性

形式	Liquid
存储溶液	PBS, 1% BSA, 50% Glycerol
保存剂	0.02% Sodium azide
存放说明	Store as concentrated solution. Centrifuge briefly prior to opening vial. For short-term storage (1-2 weeks), store at 4°C. For long-term storage, aliquot and store at -20°C or below. Avoid multiple freeze-thaw cycles.
浓度	1 mg/ml (Please refer to the vial label for the specific concentration.)
偶联	Unconjugated
注意事项	仅供实验室使用。不适用于人类或动物的任何临床、治疗或诊断用途。不适合动物或人类食用。



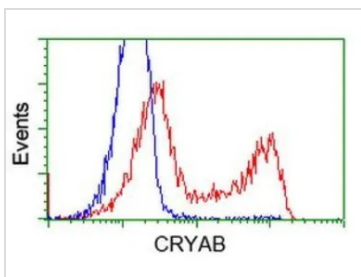
For full product information, images and publications, please visit our [website](#).

產品圖片



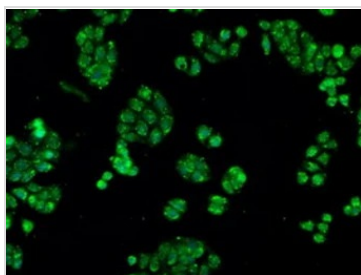
GTX84657 IHC-P Image

IHC-P analysis of human thyroid carcinoma tissue using GTX84657 alpha B Crystallin antibody [6D11].
Antigen retrieval : Heat-induced epitope retrieval by 10mM citrate buffer, pH6.0, 100°C for 10min.



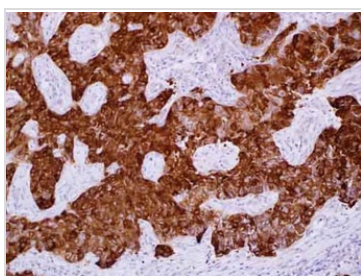
GTX84657 FCM Image

FACS analysis of HEK293T cells transfected with either alpha B Crystallin plasmid(Red) or empty vector control plasmid(Blue) using GTX84657 alpha B Crystallin antibody [6D11].



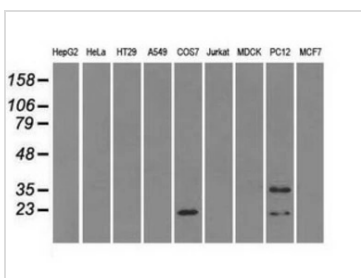
GTX84657 ICC/IF Image

ICC/IF analysis of HT29 cells using GTX84657 alpha B Crystallin antibody [6D11].



GTX84657 IHC-P Image

IHC-P analysis of human smooth muscle cancer tissue using GTX84657 alpha B Crystallin antibody [6D11].



GTX84657 WB Image

WB analysis of various cell lines using GTX84657 alpha B Crystallin antibody [6D11].
Loading : 35 ug per lane



For full product information, images and publications, please visit our [website](#).