

## IL7 Receptor alpha (phospho Tyr449) antibody

**Cat. No. GTX85604**

宿主	Rabbit
克隆	Polyclonal
同种型	IgG
实验应用	WB, IHC-P, ELISA
种属反应	Human, Mouse, Rat

## 实验应用

## 应用说明

\*最佳稀释倍数与浓度应由研究人员确认

Suggested dilution	Recommended dilution
WB	1:1000 - 1:10000
IHC-P	5 µg/ml
ELISA	1:100000

**Note : Heat induced antigen retrieval in pH 6.0 citrate buffer**

以下为常规应用缩写的中文注解

WB: 免疫印迹

ICC/IF: 细胞染色

IHC-P: 石蜡切片

IHC-Fr: 冰冻切片

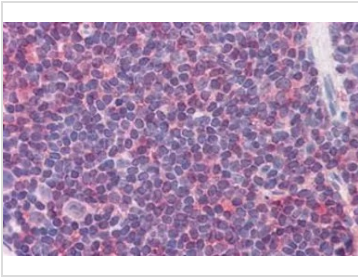
## 属性

形式	Liquid
存储溶液	20mM Potassium Phosphate, 150mM NaCl
保存剂	0.01% Sodium azide
存放说明	Store as concentrated solution. Centrifuge briefly prior to opening vial. For short-term storage (1-2 weeks), store at 4°C. For long-term storage, aliquot and store at -20°C or below. Avoid multiple freeze-thaw cycles.
浓度	1 mg/ml (Please refer to the vial label for the specific concentration.)
偶联	Unconjugated
注意事项	仅供实验室使用。不适用于人类或动物的任何临床、治疗或诊断用途。不适合动物或人类食用。



For full product information, images and publications, please visit our [website](#).

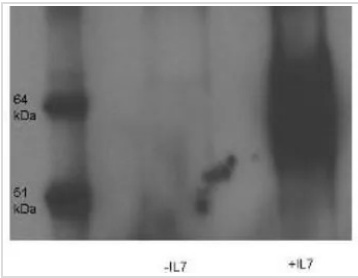
## 產品圖片

**GTX85604 IHC-P Image**

IHC-P analysis of human colon, malt tissue using GTX85604 IL7 Receptor alpha (phospho Tyr449) antibody.

Antigen retrieval : Heat-induced antigen retrieval

Dilution : 5 µg/ml

**GTX85604 WB Image**

WB analysis of thymocyte D1 cells treated with or without IL7 (50 ng/ml) using GTX85604 IL7 Receptor alpha (phospho Tyr449) antibody.

The cell lysate was immunoprecipitated with anti-Phosphotyrosine antibody and then immunoblotted by IL7 Receptor alpha (phospho Tyr449) antibody

Dilution : 1:10000



For full product information, images and publications, please visit our [website](#).