

NOTCH2 (cleaved Ala1734) antibody

Cat. No. GTX86904

| | |
|------|------------|
| 宿主 | Rabbit |
| 克隆 | Polyclonal |
| 同种型 | IgG |
| 实验应用 | WB |
| 种属反应 | Human |

实验应用

应用说明

*最佳稀释倍数与浓度应由研究人员确认

| Suggested dilution | Recommended dilution |
|--------------------|----------------------|
| WB | 1:500~1:1000 |

以下为常规应用缩写的中文注解

WB: 免疫印迹

ICC/IF: 细胞染色

IHC-P: 石蜡切片

IHC-Fr: 冰冻切片

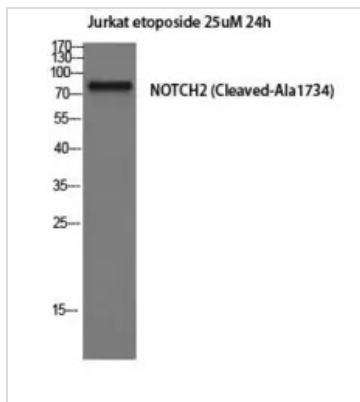
属性

| | |
|------|--|
| 形式 | Liquid |
| 存储溶液 | PBS, 150mM NaCl, 50% Glycerol |
| 保存剂 | 0.02% Sodium azide |
| 存放说明 | Store as concentrated solution. Centrifuge briefly prior to opening vial. For short-term storage (1-2 weeks), store at 4°C. For long-term storage, aliquot and store at -20°C or below. Avoid multiple freeze-thaw cycles. |
| 浓度 | Batch dependent (Please refer to the vial label for the specific concentration.) |
| 偶联 | Unconjugated |
| 注意事项 | For laboratory use only. Not for any clinical, therapeutic, or diagnostic use in humans or animals. Not for animal or human consumption. |



For full product information, images and publications, please visit our [website](#).

產品圖片

**GTX86904 WB Image**

WB analysis of Jurkat cells treated with etoposide using GTX86904 NOTCH2 (cleaved Ala1734) antibody.



For full product information, images and publications, please visit our [website](#).