

NOTCH4 (cleaved Val1432) antibody

Cat. No. GTX86910

| | |
|------|---------------|
| 宿主 | Rabbit |
| 克隆 | Polyclonal |
| 同种型 | IgG |
| 实验应用 | WB |
| 种属反应 | Human, Monkey |

引用文献 (1)

实验应用

应用说明

*最佳稀释倍数与浓度应由研究人员确认

| Suggested dilution | Recommended dilution |
|--------------------|----------------------|
| WB | 1:500 - 1:1000 |

以下为常规应用缩写的中文注解

WB: 免疫印迹

ICC/IF: 细胞染色

IHC-P: 石蜡切片

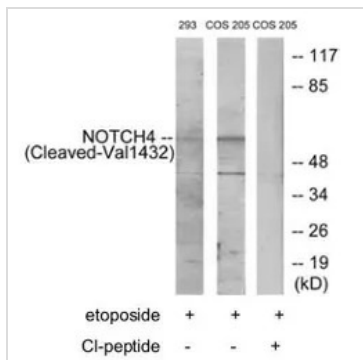
IHC-Fr: 冰冻切片

属性

| | |
|------|--|
| 形式 | Liquid |
| 存储溶液 | PBS, 150mM NaCl, 0.5% BSA, 50% glycerol (Please contact us for BSA-free format) |
| 保存剂 | 0.02% Sodium azide |
| 存放说明 | Store as concentrated solution. Centrifuge briefly prior to opening vial. For short-term storage (1-2 weeks), store at 4°C. For long-term storage, aliquot and store at -20°C or below. Avoid multiple freeze-thaw cycles. |
| 浓度 | Batch dependent (Please refer to the vial label for the specific concentration.) |
| 偶联 | Unconjugated |
| RRID | AB_10721650 |
| 注意事项 | 仅供实验室使用。不适用于人类或动物的任何临床，治疗或诊断用途。不适合动物或人类食用。 |

For full product information, images and publications, please visit our [website](#).

產品圖片



GTX86910 WB Image

WB analysis of COS-7 and 293 cells all treated with etoposide (25uM, 1hour) lysates using GTX86910 NOTCH4 (cleaved Val1432) antibody.



For full product information, images and publications, please visit our [website](#).