

## SFRS11 antibody

**Cat. No. GTX87310**

|      |              |
|------|--------------|
| 宿主   | Rabbit       |
| 克隆   | Polyclonal   |
| 同种型  | IgG          |
| 实验应用 | WB           |
| 种属反应 | Human, Mouse |

## 实验应用

## 应用说明

\*最佳稀释倍数与浓度应由研究人员确认

| Suggested dilution | Recommended dilution |
|--------------------|----------------------|
| WB                 | 1:500~1:1000         |

以下为常规应用缩写的中文注解

WB: 免疫印迹

ICC/IF: 细胞染色

IHC-P: 石蜡切片

IHC-Fr: 冰冻切片

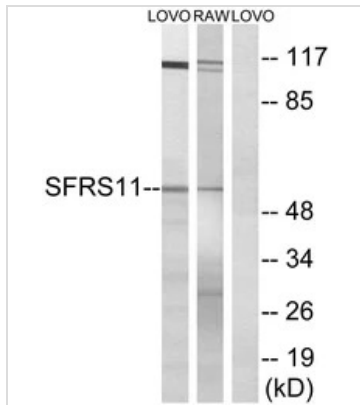
## 属性

|      |  |
|------|--|
| 形式   | Liquid   |
| 存储溶液 | PBS, 150mM NaCl, 50% Glycerol  |
| 保存剂  | 0.02% Sodium azide   |
| 存放说明 | Store as concentrated solution. Centrifuge briefly prior to opening vial. For short-term storage (1-2 weeks), store at 4°C. For long-term storage, aliquot and store at -20°C or below. Avoid multiple freeze-thaw cycles. |
| 浓度   | Batch dependent (Please refer to the vial label for the specific concentration.)   |
| 偶联   | Unconjugated   |
| 注意事项 | For laboratory use only. Not for any clinical, therapeutic, or diagnostic use in humans or animals. Not for animal or human consumption.   |



For full product information, images and publications, please visit our [website](#).

## 產品圖片

**GTX87310 WB Image**

WB analysis of LOVO and RAW264.7 cell lysates using GTX87310 SFRS11 antibody. The lane on the right is blocked with the synthesized peptide.



For full product information, images and publications, please visit our [website](#).