

CDCA4 antibody

Cat. No. GTX87853

| | |
|------|---------------|
| 宿主 | Rabbit |
| 克隆 | Polyclonal |
| 同种型 | IgG |
| 实验应用 | ICC/IF, IHC-P |
| 种属反应 | Human |

实验应用

应用说明

*最佳稀释倍数与浓度应由研究人员确认

| Suggested dilution | Recommended dilution |
|--------------------|----------------------|
| ICC/IF | 1:100~1:500 |
| IHC-P | 1:50~1:100 |

以下为常规应用缩写的中文注解

WB: 免疫印迹

ICC/IF: 细胞染色

IHC-P: 石蜡切片

IHC-Fr: 冰冻切片

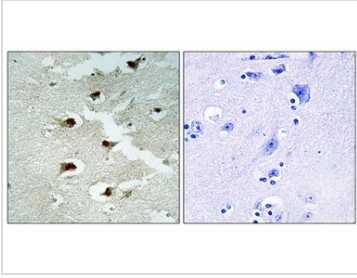
属性

| | |
|------|--|
| 形式 | Liquid |
| 存储溶液 | PBS, 150mM NaCl, 50% Glycerol |
| 保存剂 | 0.02% Sodium azide |
| 存放说明 | Store as concentrated solution. Centrifuge briefly prior to opening vial. For short-term storage (1-2 weeks), store at 4°C. For long-term storage, aliquot and store at -20°C or below. Avoid multiple freeze-thaw cycles. |
| 浓度 | Batch dependent (Please refer to the vial label for the specific concentration.) |
| 偶联 | Unconjugated |
| 注意事项 | For laboratory use only. Not for any clinical, therapeutic, or diagnostic use in humans or animals. Not for animal or human consumption. |

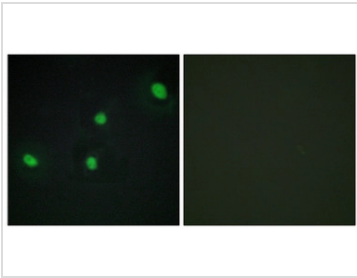


For full product information, images and publications, please visit our [website](#).

產品图片

**GTX87853 IHC-P Image**

IHC-P analysis of human brain tissue using GTX87853 CDCA4 antibody. The picture on the right is blocked with the synthesized peptide.

**GTX87853 ICC/IF Image**

ICC/IF analysis of HepG2 cells using GTX87853 CDCA4 antibody. The picture on the right is blocked with the synthesized peptide.



For full product information, images and publications, please visit our [website](#).