

PEBP4 antibody, C-term

Cat. No. GTX88268

宿主	Goat
克隆	Polyclonal
同种型	IgG
实验应用	WB, IHC-P
种属反应	Human

实验应用

应用说明

*最佳稀释倍数与浓度应由研究人员确认

Suggested dilution	Recommended dilution
WB	1-3 μ g/ml
IHC-P	5-10 μ g/ml

Note : Human Pancreas shows staining consistent with lysosomes.

以下为常规应用缩写的中文注解

WB: 免疫印迹

ICC/IF: 细胞染色

IHC-P: 石蜡切片

IHC-Fr: 冰冻切片

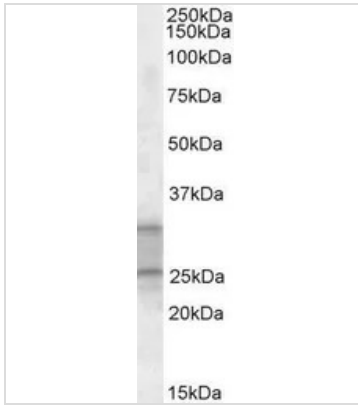
属性

形式	Liquid
存储溶液	TBS, 0.5% BSA
保存剂	0.02% Sodium azide
存放说明	Store as concentrated solution. Centrifuge briefly prior to opening vial. For short-term storage (1-2 weeks), store at 4°C. For long-term storage, aliquot and store at -20°C or below. Avoid multiple freeze-thaw cycles.
浓度	0.50 mg/ml (Please refer to the vial label for the specific concentration.)
偶联	Unconjugated
注意事项	仅供实验室使用。不适用于人类或动物的任何临床, 治疗或诊断用途。不适合动物或人类食用。



For full product information, images and publications, please visit our [website](#).

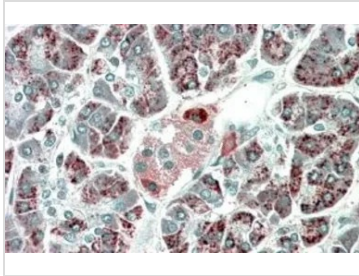
產品圖片

**GTX88268 WB Image**

WB analysis of human heart lysate using GTX88268 PEBP4 antibody, C-term.

Dilution : 1µg/ml

Loading : 35µg protein in RIPA buffer

**GTX88268 IHC-P Image**

IHC-P analysis of human pancreas using GTX88268 PEBP4 antibody, C-term.

Antigen retrieval : Tris/EDTA buffer pH 9

Dilution : 5µg/ml



For full product information, images and publications, please visit our [website](#).