

RAD9A antibody, C-term

Cat. No. GTX89156

宿主	Goat
克隆	Polyclonal
同种型	IgG
实验应用	WB, ELISA, Sandwich ELISA
种属反应	Human

实验应用

应用说明

*最佳稀释倍数与浓度应由研究人员确认

Suggested dilution	Recommended dilution
WB	0.3-1µg/ml
ELISA	Assay dependent
Sandwich ELISA	Assay dependent

以下为常规应用缩写的中文注解

WB: 免疫印迹

ICC/IF: 细胞染色

IHC-P: 石蜡切片

IHC-Fr: 冰冻切片

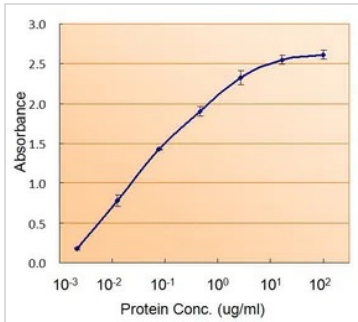
属性

形式	Liquid
存储溶液	TBS, 0.5% BSA
保存剂	0.02% Sodium azide
存放说明	Store as concentrated solution. Centrifuge briefly prior to opening vial. For short-term storage (1-2 weeks), store at 4°C. For long-term storage, aliquot and store at -20°C or below. Avoid multiple freeze-thaw cycles.
浓度	0.50 mg/ml (Please refer to the vial label for the specific concentration.)
偶联	Unconjugated
注意事项	仅供实验室使用。不适用于人类或动物的任何临床, 治疗或诊断用途。不适合动物或人类食用。



For full product information, images and publications, please visit our [website](#).

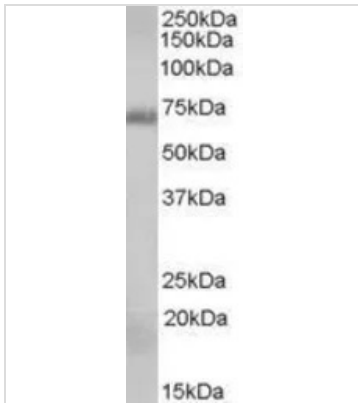
產品圖片

**GTX89156 ELISA Image**

ELISA analysis of RAD9A protein using GTX89156 RAD9A antibody, C-term.

Capture : GTX100078 (5μg/ml)

Detection : GTX89156 (5μg/ml)

**GTX89156 WB Image**

WB analysis of A431cell lysate using GTX89156 RAD9A antibody, C-term.

Dilution : 0.3μg/ml

Loading : 35μg protein in RIPA buffer



For full product information, images and publications, please visit our [website](#).