

## HSC70 antibody, Internal

Cat. No. GTX89273

宿主	Goat
克隆	Polyclonal
同种型	IgG
实验应用	WB, ICC/IF
种属反应	Human, Mouse

## 实验应用

## 应用说明

\*最佳稀释倍数与浓度应由研究人员确认

Suggested dilution	Recommended dilution
WB	0.03-0.1µg/ml
ICC/IF	10µg/ml

**Note : Strong expression of the protein seen in the cytoplasm of HeLa cells.**

以下为常规应用缩写的中文注解

WB: 免疫印迹

ICC/IF: 细胞染色

IHC-P: 石蜡切片

IHC-Fr: 冰冻切片

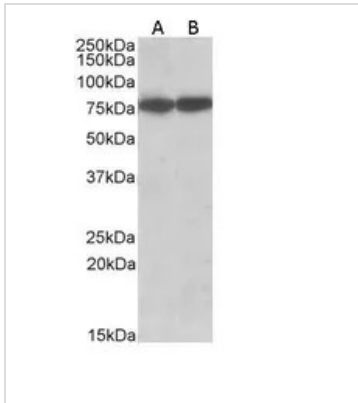
## 属性

形式	Liquid
存储溶液	TBS, 0.5% BSA
保存剂	0.02% Sodium azide
存放说明	Store as concentrated solution. Centrifuge briefly prior to opening vial. For short-term storage (1-2 weeks), store at 4°C. For long-term storage, aliquot and store at -20°C or below. Avoid multiple freeze-thaw cycles.
浓度	0.50 mg/ml (Please refer to the vial label for the specific concentration.)
偶联	Unconjugated
注意事项	仅供实验室使用。不适用于人类或动物的任何临床, 治疗或诊断用途。不适合动物或人类食用。



For full product information, images and publications, please visit our [website](#).

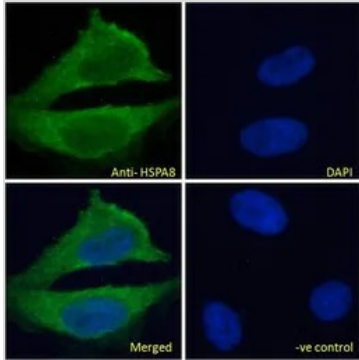
## 產品圖片

**GTX89273 WB Image**

WB analysis of HepG2 (A) and NIH-3T3 (B) cell lysate using GTX89273 HSC70 antibody, Internal.

Dilution : 0.03 $\mu$ g/ml

Loading : 35 $\mu$ g protein in RIPA buffer

**GTX89273 ICC/IF Image**

ICC/IF analysis of PFA fixed HeLa cells using GTX89273 HSC70 antibody, Internal.

Green : Primary antibody

Blue : DAPI

Negative control : Unimmunized goat IgG

Permeabilization : 0.15% Triton

Dilution : 10 $\mu$ g/ml



For full product information, images and publications, please visit our [website](#).